

SPEC02

SUNWOOD®

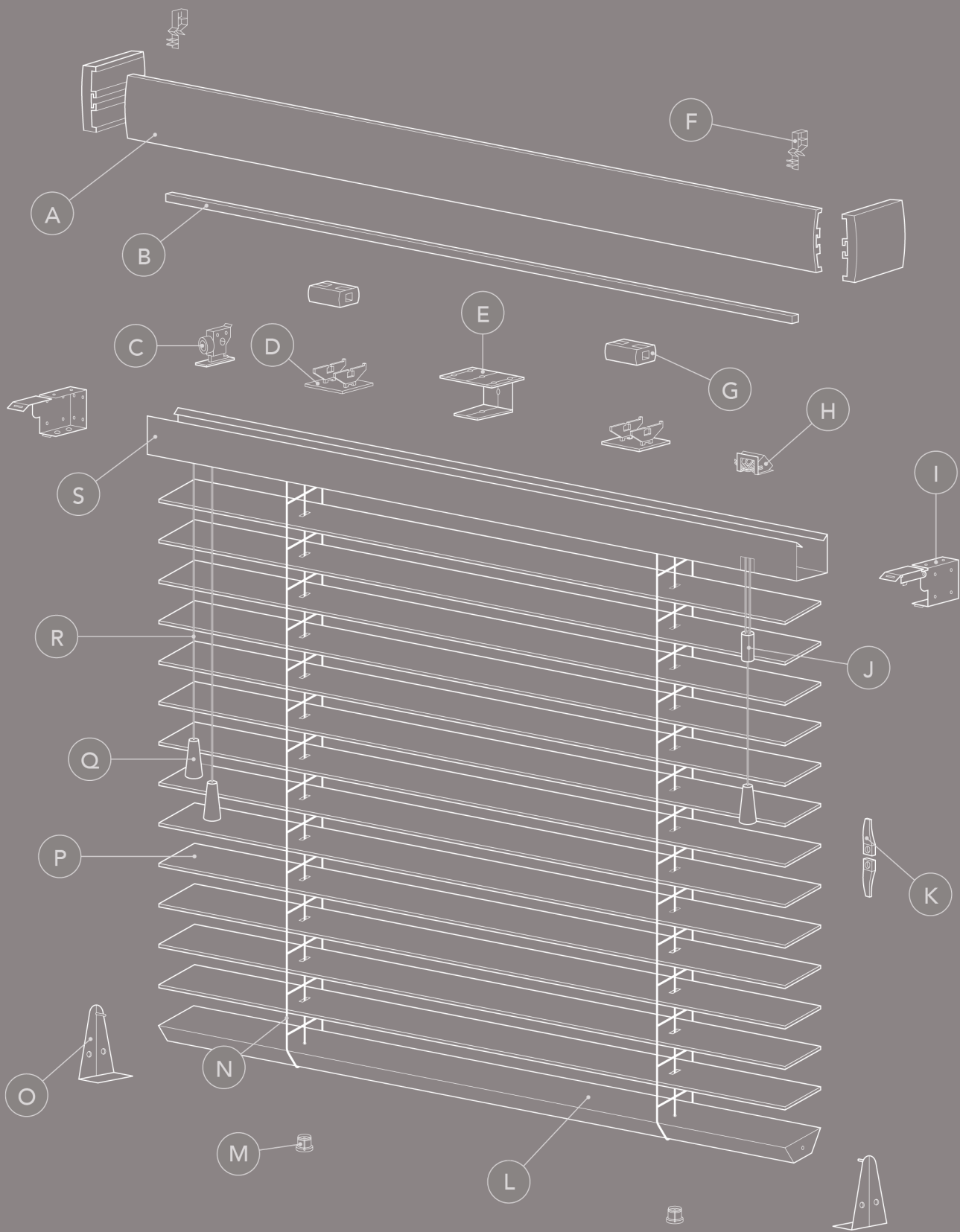
FAUXWOOD



SPECIFICATION

Sunwood® Fauxwood is a range of high quality PVC Venetians which emulate a sophisticated wood grain or a contemporary smooth finish which makes it the perfect solution for areas of high moisture such as bathrooms or kitchens.

SUNWOOD® FAUXWOOD VENETIAN BLIND - EXPLODED VIEW



- | | | |
|---------------------------------|-------------------------------|----------------------------|
| A Valance | H Cord Lock | O Hold Down Bracket |
| B Tilt Rod | I End Bracket | P Slat |
| C Tilter | J Cord Condenser | Q Tassel |
| D Tape Roll Support | K Two-Piece Cord Cleat | R Cord |
| E Center Support Bracket | L Bottom Bar | S Headrail |
| F Valance Clip | M Bottom Bar Button | |
| G Tape Roll | N Ladder Cord | |

SUNWOOD®

FAUXWOOD

Product Information Fact Sheet

SLAT WIDTHS	TAPE WIDTHS AVAILABLE
35mm	25mm
50mm	25mm or 38mm

25mm tape width is the standard default for 50mm blinds. Alternative tape colours and 38mm tapes are available on request.

FAUXWOOD COLOUR	SLAT SIZE	DEFAULT TAPE COLOUR
Abyss**	50mm	Static
Amber*	35mm & 50mm	Toffee
Arctic Oak*	50mm	Chalk
Chroma**	50mm	Jet
Desert Oak*	35mm & 50mm	Hessian
Linara	35mm & 50mm	Barley
Linara Fine Grain	35mm & 50mm	Barley
Lunar Oak*	50mm	Lunar
Orion	35mm & 50mm	Gallant
Orion Fine Grain	35mm & 50mm	Gallant
Mirage	35mm & 50mm	Vanilla
Mirage Fine Grain	35mm & 50mm	Vanilla
Mission	35mm & 50mm	Lunar
Mission Fine Grain	35mm & 50mm	Lunar
Scandi Oak*	50mm	Dove
Serene	35mm & 50mm	Cotton
Serene Fine Grain	35mm & 50mm	Cotton
True	35mm & 50mm	Chalk
True Fine Grain	35mm & 50mm	Chalk

* only available in fine grain finish

** only available in flat finish

Due to the dark matt colour finish on Chroma and Abyss slats light scratches may be visible from 1mtr.

Colour Coordination

- All parts of the blind are colour coordinated.
- The headrail, bottom bar buttons and cord condenser are colour co-ordinated PVC.
- Toggles are all colour matched wood.
- Cord and ladder braid are colour coordinated to slats.

PLEASE NOTE: Due to PVC having a low heat distortion temperature, coupled with increased heat absorption on dark colours, a degree of warping may occur where blinds are subject to high levels of direct sunlight. Note Chroma and Abyss and made using an enhance PVC+ formula to improve their performance in such conditions. We would advise that in such areas the customer select the PVC+ product, or alternatively blinds from our Sunwood real wood collection.

Dimensions of Fauxwood Headrails

35MM	42mm height x 42mm depth
50MM	42mm height x 59mm depth

Head rails include metal inserts

Wholesale boxblinds are supplied in 1300mm drop

1300MM - THIS CAN BE LENGTHENED TO:	3000mm on widths 350mm–1400mm
	2400mm on widths 1500mm–2600mm

Minimum & Maximum Widths & Drops

MINIMUM WIDTH	290mm
MINIMUM DROP	150mm
MAXIMUM WIDTH	2600mm
MAXIMUM DROP	3000mm

Blinds over 1400mm wide are restricted to a maximum drop of 2400mm

Number of ladders Per blind

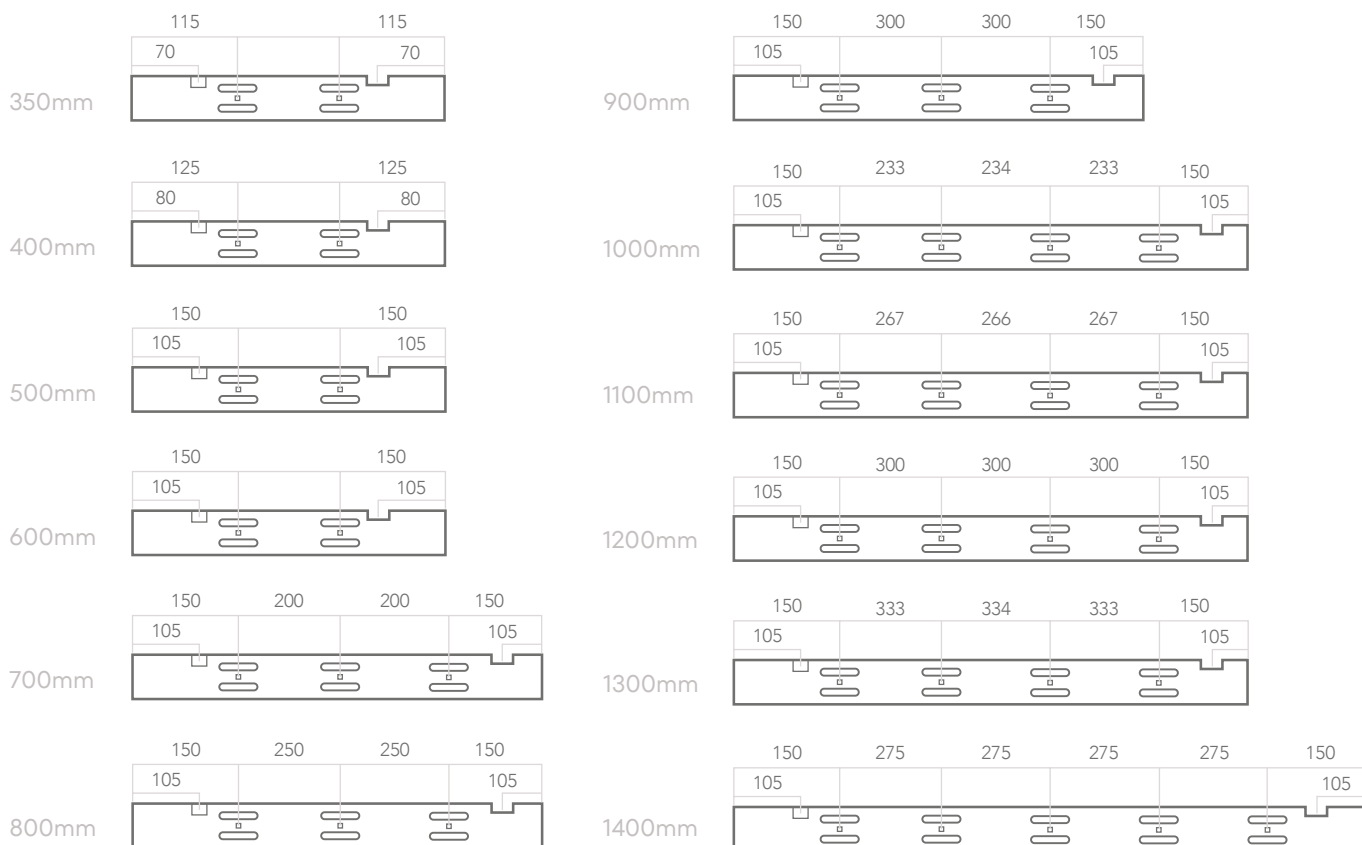
35MM SLATS	
WIDTH	NO. OF LADDERS
350mm-600mm	2
601mm-900mm	3
901mm-1300mm	4
1301mm-1500mm	5
1501mm-1800mm	6
1801mm-2100mm	7
2101mm-2400mm	8
2401mm-2600mm	9

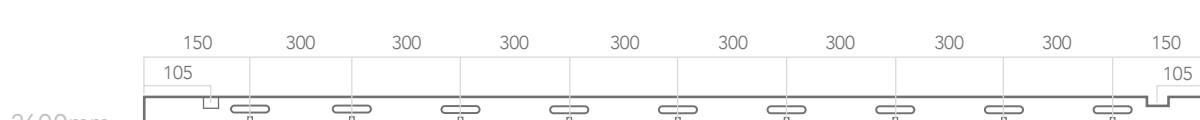
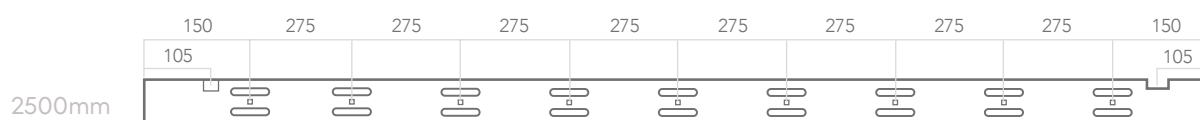
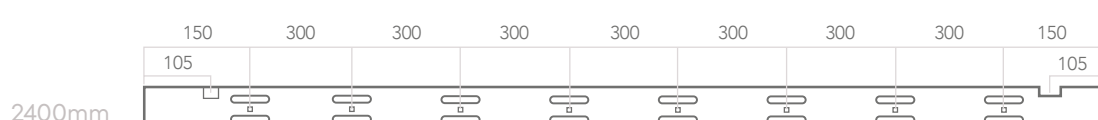
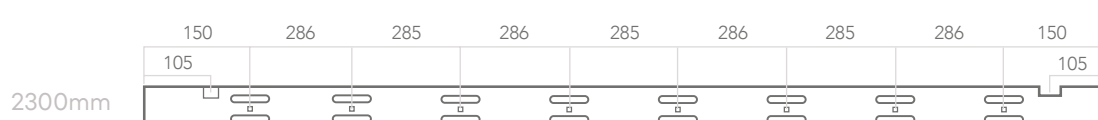
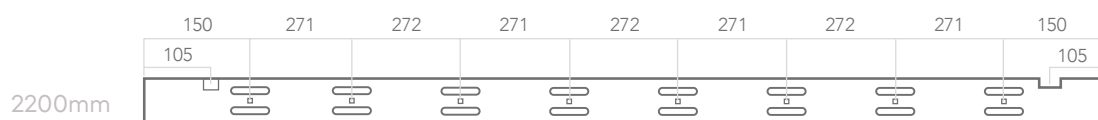
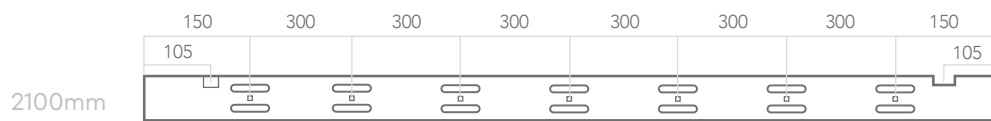
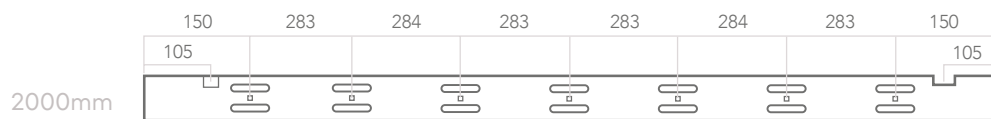
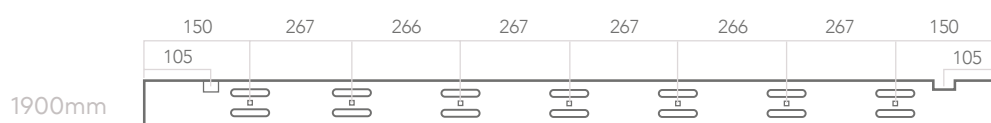
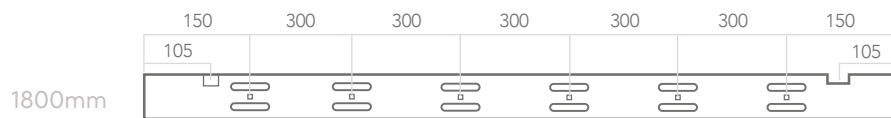
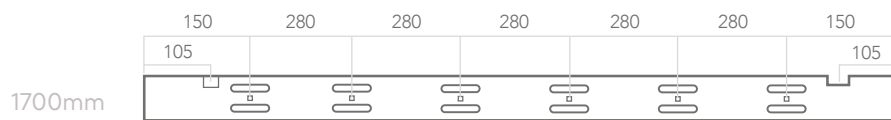
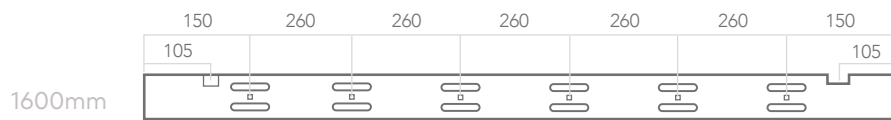
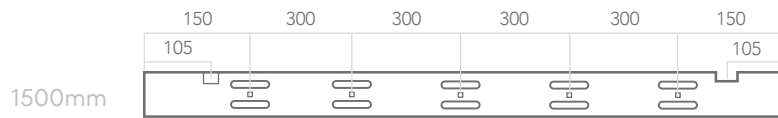
50MM SLATS	
WIDTH	NO. OF LADDERS
350mm-600mm	2
601mm-900mm	3
901mm-1300mm	4
1301mm-1500mm	5
1501mm-1800mm	6
1801mm-2100mm	7
2101mm-2400mm	8
2401mm-2600mm	9

(Alternative box size may be used to cover OOS, at management discretion)

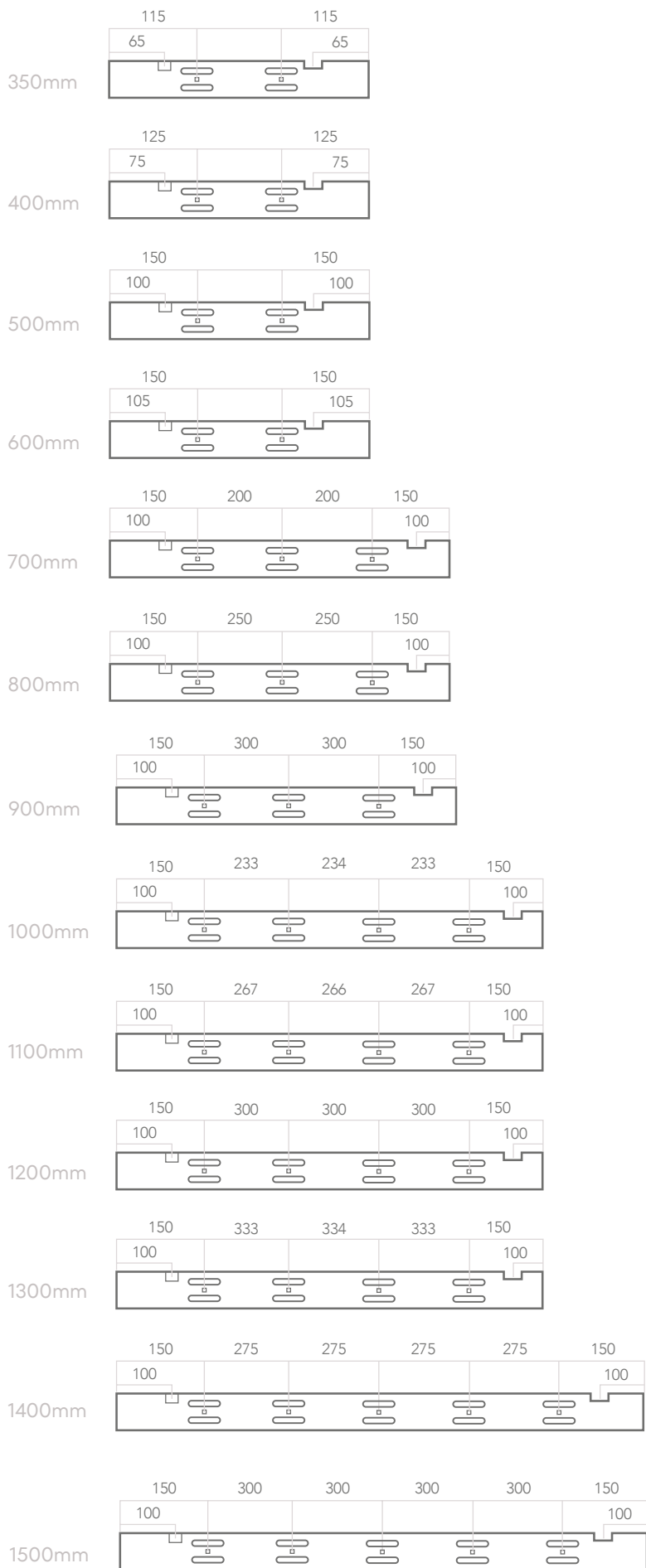
Slat alignment is available on Sunwood Fauxwood and Sunwood Fauxwood with tapes.
Please state at point of order.

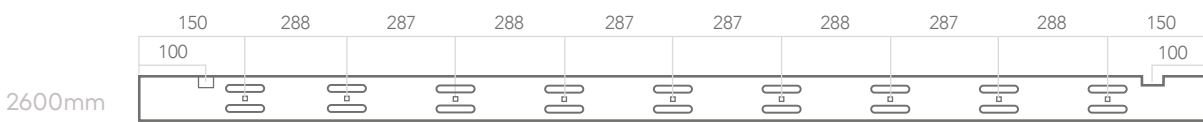
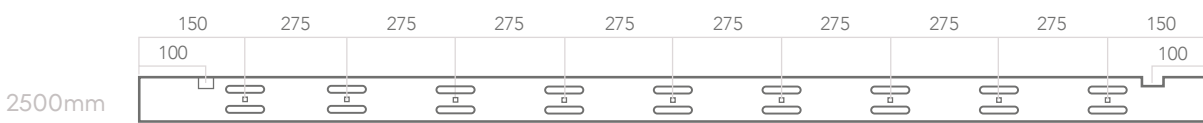
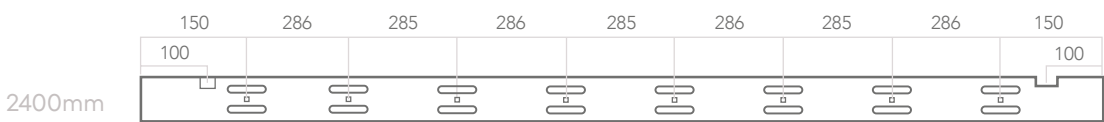
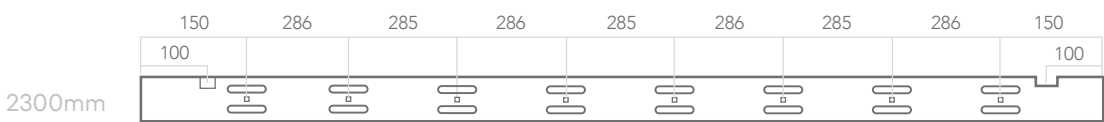
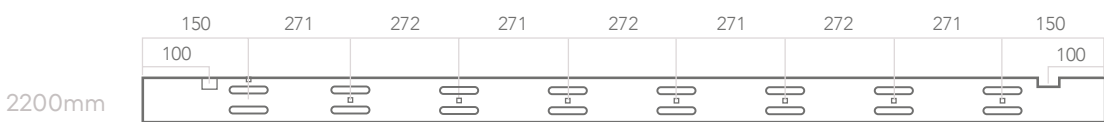
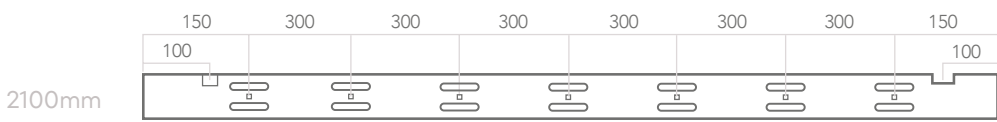
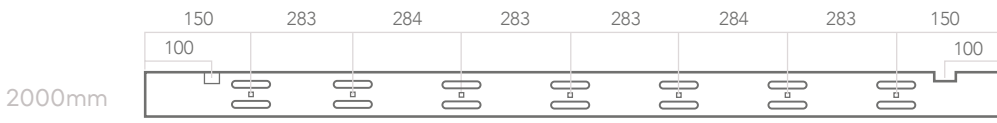
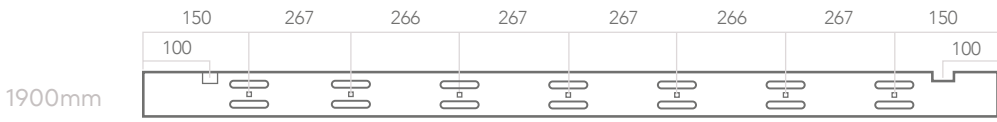
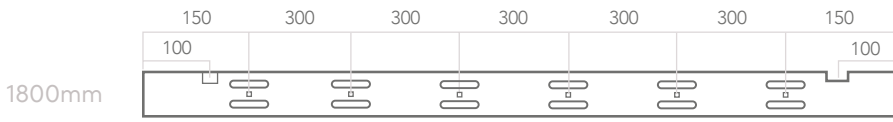
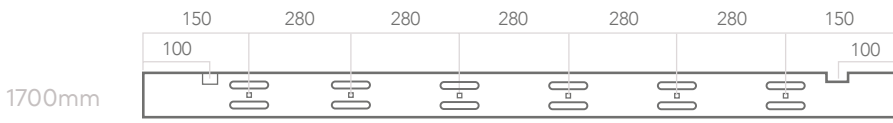
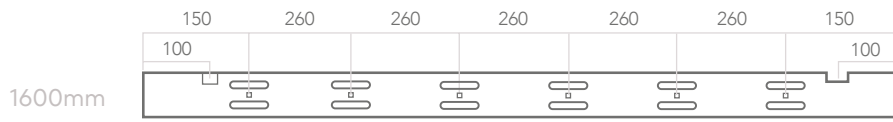
35mm Fauxwood Headrail Punch Positions:





50mm Fauxwood Headrail Punch Positions:





Control Options

- Standard control only.
- Raise on the right, tilt on the left.

Accessories

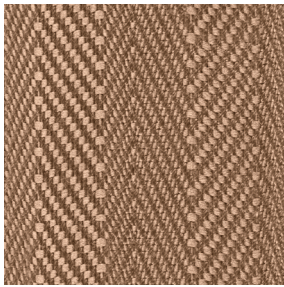
Ladders

Ladders are colour matched to the slats:

35MM	37mm height x 30mm depth
50MM	54mm height x 44mm depth

Tapes

24 tape options are available:

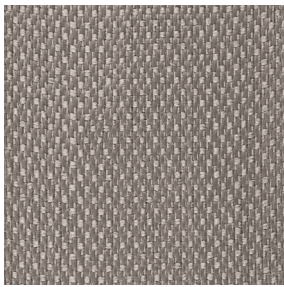


17
Herringbone Weave tapes, available in 2 sizes; 25mm and 38mm.

Herringbone Weave tapes are the standard tape default:

- 25mm tape for 35mm slat
- 25mm tape for 50mm slat

Each Fauxwood colour has a Decora recommended tape option which co-ordinates with the slat colour. Customers can choose an alternative tape colour or tape size. (38mm flatweave tapes are an additional charge.)



7
Flatweave tapes available in 38mm only.

Tapes are secured to the bottom of the bottom bar using complimenting tape pins.

If same number of tapes required on multiple blinds, please state at point of order.

When ordering for bay windows please state requirement for same box size at point of order if required. Slat alignment is available on Sunwood Fauxwood and Sunwood Fauxwood with tapes. Please state at point of order.

Valance

- D-shaped valance.
- Valance clips are attached to head rail.
- Due to weight of PVC valance, dual locks are not used.
- Fine Grain blinds are finished with an Fine Grain valance.



Valance Clip

Valance Returns/Pelmets

PLAIN FINISH	Default. Valance will be 12mm longer than the headrail of the blind.
SINGLE RETURN	Supplied with one mitred return. Internal measurement 13mm. External measurement 21mm.
DOUBLE RETURN	Supplied with two mitred returns. Internal measurement 14mm. External measurement 30mm.
UNCUT	Valance will be left uncut and will be 35mm longer than the width of the Box Blind. One end of the valance will be mitred and one will be straight.
SPECIFIED LENGTH	If a customer requests for a valance to be a specific length there will be no additional charge provided the valance is no longer than the Box Blind width + 35mm. Any valance that is longer than this cannot be made from the valance supplied with the blind and will be charged as a valance extra.

Bottom Bar

- Colour Co-ordinated trapezoid.
- Bottom bar is not embossed.
- Bottom bar is solid PVC.
- 35mm Bottom Bar size: 35mm depth x 13mm height
- 50mm Bottom Bar size: 50mm depth x 13mm height
- Bottom Bar buttons have a pulley wheel; this is used for wider blinds (boxed blinds size: 1401mm wide up). This pulley wheel assists the user making it easier to raise wider blinds.

Slats

- All slats are provided with a 2.8mm thickness.

Tassels

- Tassels will be colour matched wood as standard.
- The raise control will have 1 x large tassel and the tilt control will have 2 x small tassels
- Alternative metal cylinder tassels available with surcharge on request.
Note: Cylinder tassel - one size only.

Cylinder Tassel

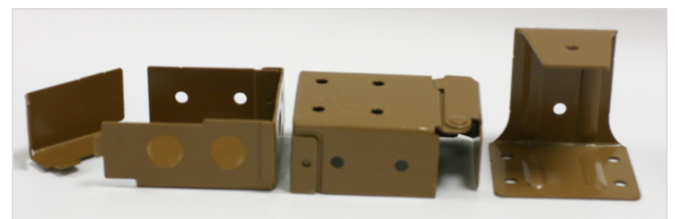


Brackets

As standard all Fauxwood Blinds are supplied with 2 box brackets.

These brackets can be fixed in a number of ways;

TOP FIX	Bracket is screwed on to the top of the window recess
END FIX	Bracket is screwed on to the side of the window recess
FACE FIX	Bracket is screwed on to the front of the window frame



Box Brackets

Centre Support Bracket

Blinds with 3 or more ladders will have a centre support bracket. This will depend on the width.

3 and 4 ladders	1 x centre support bracket
5 ladders	2 x centre support brackets
6 and 7 ladders	3 x centre support brackets
8 and 9 ladders	4 x centre support brackets

Alternative Brackets

Alternative brackets are also available. These are called Swivel brackets shown on the right. They are also available as an extension bracket. These are available for both 35mm and 50mm.

The extension swivel brackets will extend the Sunwood® Fauxwood blind out from the window.



Swivel Bracket



Extension Swivel Bracket

Dimensions

BOX BRACKET	35mm	50mm deep x 47mm high
	50mm	65mm deep x 47mm high
SWIVEL BRACKET	35mm	50mm deep
	50mm	65mm deep
EXTENSION SWIVEL BRACKET	35mm will extend blind by 40mm	Total size is 87mm
	50mm will extend the blind by 45mm	Total size is 110mm

Hold Down Brackets

Hold down brackets are used to attach the bottom of the blind to a window or door to prevent it from swinging to and fro. There is a small hole on either end of the bottom bar. The hold down bracket is attached to the door with two screws then the tips of the brackets are inserted to the holes on the bottom bar.



Hold Down Bracket

Stack Height

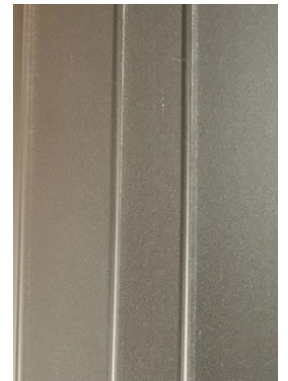
The stacking height refers to the measurement from top to bottom when the blind is fully pulled up. These stacking heights should be treated as advice only. There is a slight variance in the slat thickness and in how the slats pack with the ladder therefore each individual blind will be different.

BLIND DROP (MM)	35MM SLAT STACK HEIGHT (MM)	50MM SLAT STACK HEIGHT (MM)
500	115	105
750	145	130
1000	170	145
1250	195	170
1500	220	190
1750	245	210
2000	270	230
2250	300	250
2500	325	270
2750	350	290
3000	375	310

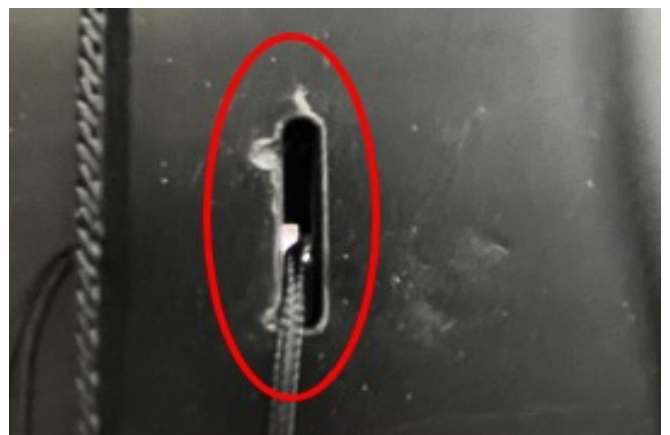
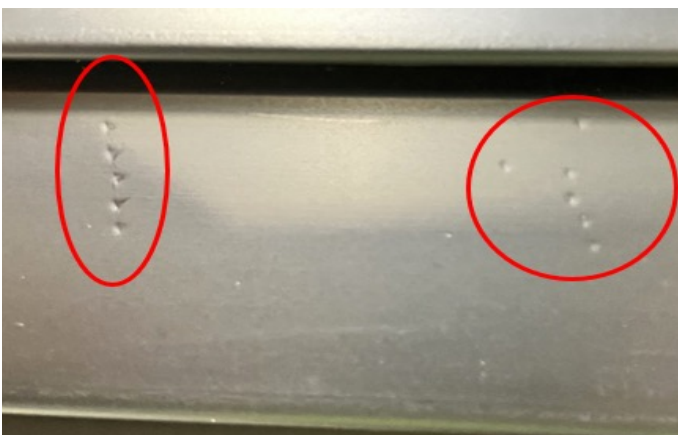
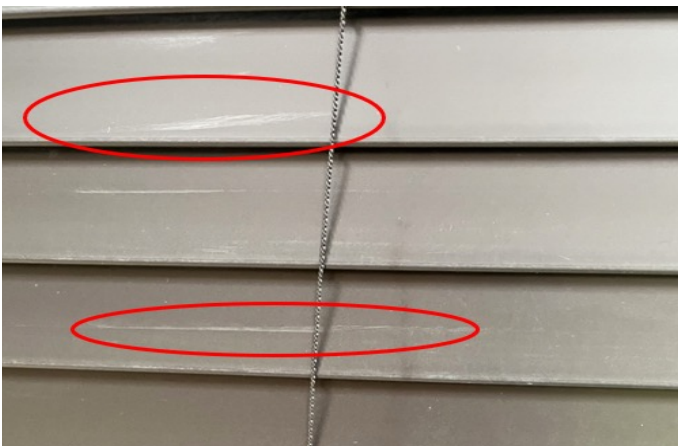
Chroma & Abyss Quality Reference

Due to the composition and manufacturing process to obtain the PVC plus colours, Abyss and Chroma, the below photos can be used as a reference as to what is deemed acceptable quality and finish of the slats. Please note blinds should be checked 1 metre from the blind.

ACCEPTABLE SLAT QUALITY



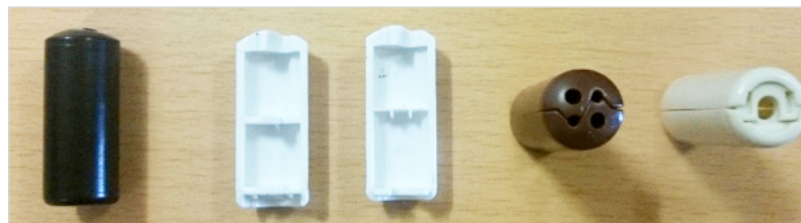
UNACCEPTABLE SLAT QUALITY



Child Safety

All Sunwood® Fauxwood blinds come with a colour co-ordinated cord condenser and a two-part safety cleat.

The cord condenser is designed to consolidate the pull cords into one string and also to break-away, stopping any loops from forming. The safety cleat is used to wrap the cord around to keep out of children's reach.



Closed

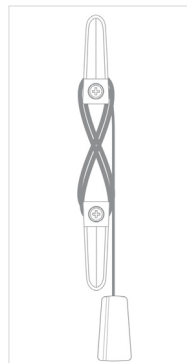
Open

Top

Bottom



Two-part safety cleat



Cord wrapped in a figure of eight motion

Cord Lengths and Installation Heights

- If the installation height is known the distance from the floor to the bottom of the pull cords shall be at least 1675mm, to allow for the 175mm extension of the tilt cords in the closed position.
- If the installation height is not known and the drop of the blind is less than 2.5m, due to the tilt cords extending by 175mm, the maximum cord length allowed is 825mm.
- If the installation height is not known and the drop of the blind is 2.5m or greater, then the cords shall be less than the drop of the blind minus 1675mm.
- Please note, blinds will be manufactured with their default control length provided that this complies with the Child Safety regulations. When large installation heights are provided, the customer must request extended control lengths if required.
- The standard control length on Sunwood® Fauxwood are 2/3 the drop of the blind.
- If the control length is not within the child safety rules it will be reduced to the max length allowed by child safety.

All blinds are supplied with compliant warning stickers and warning tags.

Motorisation

Sunwood Fauxwood venetian blinds can be motorised to offer ultimate convenience of light control and privacy in the home. At the touch of a button you can tilt your blinds, especially convenient for blinds in hard to reach places.

T50 RTS

A radio controlled battery powered motor suitable for all sizes of Sunwood blinds enabling convenient control of the tilt of your blind.

Voltage	12V DC
Power	9V DC – 14V DC
Torque	1 Nm
Speed	10 rpm
Radio Freq	433,42 MHz
Width	390mm – 2600mm
Drop	150mm – 3000mm
Headrail	PVC Headrail (Metal inserts on blinds over 400mm wide)
Control	Remote control, wall switch or Somfy TaHoma smart boxes